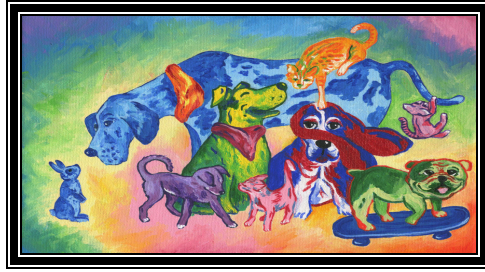


Wag-A-Thon 2009



Sponsor Levels and Benefits

All sponsors will have its full contact information listed on the back of the **Walk Route Maps** that every Wag-A-Thon participant receives *as well as in the **Sponsor Directory** distributed with the Summer 2009 newsletter*

PLATINUM (\$2,500)

- Welcoming recognition banner bearing your **NAME (or LOGO)** at the Wag-A-Thon
- A 10 x 10 booth in the Premier area with tent, 6ft table, and two chairs provided by us
- 4 Wag-A-Thon 2009 T-shirts
- Your LOGO printed under "Platinum Sponsors" in the Wag-A-Thon Brochures
- Your LOGO printed PROMINENTLY on the event T-shirts
- Your LOGO on the Start Banner & NAME on a Route Marker
- Your LOGO **and link to your website** on our website's Wag-A-Thon page and in our newsletter

GOLD \$1,000

- A 10 x 10 booth in the Premier area with tent, 6ft table, and two chairs provided by us
- 4 Wag-A-Thon 2009 T-shirts
- Your LOGO printed under "Gold Sponsors" in the Wag-A-Thon Brochures
- Your LOGO printed on the event T-shirts
- Your LOGO on the Start Banner and on a Route Marker
- Your LOGO on our website's Wag-A-Thon page and in our newsletter

SILVER \$500

- A 10 x 10 booth in the Premiere area with tent, 6ft table, and two chairs provided by us
- 4 Wag-A-Thon 2009 T-shirts
- Your NAME printed under "Silver Sponsors" in the Wag-A-Thon Brochures
- Your NAME printed on the event T-shirts
- Your NAME on a Route Marker
- Your NAME on our website's Wag-A-Thon page and in our newsletter

BRONZE \$250

- A 10 x 10 space in the Bazaar area (*no furnishings or tents are provided for the Bazaar booths but can be arranged with the designated rental company at their fees.*)
- 2 Wag-A-Thon 2009 T-shirts
- Your NAME printed under "Bronze Sponsors" in the Wag-A-Thon Brochures
- Your NAME on our website's Wag-A-Thon page and in our newsletter

Which Area is Right for You? Premiere vs. Bazaar

Due to county regulations, there can be no monetary transactions other than donations to the Pet Project Foundation in the Premiere Booth location. The Premiere Booths are for maximum exposure at the event. Free samples, pamphlets, etc. may be distributed. Ordering arrangements can be made; however, please bear in mind that the county prohibits sales at this location. The Bazaar is on private property and sales ARE permitted. Please provide a copy of your current California Seller's Permit with your check. In compliance with the county, we are required to collect 10% of the gross receipts from each vendor's sales at the end of the event. No tents or furnishings will be provided in the Bazaar area so please bring your own set-up or call for the rental company information. The event begins at 8:30 a.m. and will end around 1 p.m. Please plan to arrive early and have your booth set up by 8 a.m. For additional information please contact : Brenda Whitney 949-218-8617.

Checks are payable to :Wag-A-Thon 2009

**P.O. Box 756
Dana Point, CA 92629**

*The Pet Project Foundation is a 501(c)3 non-profit organization
Please consult your tax advisor for deduction guidelines. EIN # 33-0030634.*